



RIMAGE™

PRINT TECHNOLOGIES

Advancing the art of digital delivery.



CD/DVD

| | |
|-------------|-----------------------------------------------|
| EVEREST™ II | Photorealistic printing, indestructible image |
| PRISMPUS!™ | Unbeatable speed and price per disc |
| RIMAGE 480i | World-class printing, HP quality color |

RIMAGE PRINT TECHNOLOGIES

INNOVATIVE TECHNOLOGY, ASTONISHING QUALITY




The industry leader in CD/DVD publishing brings you the most innovative, versatile, high-performing print technologies available today. Stunning, professional results every time, on demand. Whether you need to print spectacular photos or serial numbers, the world's most advanced label printing technology conveys your company's message and image flawlessly—the best quality text and graphics printed directly to the surface of your CD/DVD media. From Everest II's unique offset quality, to the unsurpassed speed of PrismPlus!™ to Rimage 480i's bold, rich images, Rimage has the ideal print solution for your information environment.

UNPRECEDENTED SPEED

Rimage printers match quality with speed. Everest II burns through every job at a remarkable pace—less than one minute per disc. PrismPlus! creates a label in an amazing five seconds, the fastest print rate for full coverage labels and ideal for high volume output. The Rimage 480i desktop printer features the best speed in its class. Whatever your print labeling needs, Rimage printers provide the speed to succeed.

AN ADVANTAGE FOR EVERY PRINTING APPLICATION

Engineered for maximum efficiency and quality, Rimage print technologies deliver your image perfectly and economically.

| RIMAGE PRINTER | | Scratch Resistance | Water Resistance | Photo Quality Printing | Cost of Printer | Print Time per Disc | Print Cost per Disc |
|-----------------------------------------------------------------------------------|-----------------------------------------|--------------------|------------------|------------------------|-----------------|---------------------|---------------------|
|  | EVEREST II Thermal Retransfer | ● | ● | ◐ | ○ | ◐ | ◐ |
|  | PRISMPLUS! Thermal Transfer | ◐ | ● | ■ | ◐ | ● | ● |
|  | RIMAGE 480i Thermal Inkjet | ◐ | ■ | ● | ● | ○ | ○ |
| | | ● | ◐ | ○ | ◐ | ■ | ■ |

Excellent ● Very Good ◐ Good ○ Fair ◐ Poor ■



IMPECCABLE PRINT FOR EVERY INFORMATION ENVIRONMENT

At Rimage, our clients are as diverse as our solutions. Whatever your direct-to-disc printing needs, you can expect impeccable performance and unparalleled speed—engineered for efficiency and affordability. Available as stand-alone units or paired with a range of publishing solutions, Rimage print technology can meet every data publishing, duplication, storage, or printing need from one-of-a-kind label printing, to large capacity performance, to convenient, professional quality straight from your desktop. All three Rimage printers print on silver or white CDs and DVDs, offering you a world of choice when it comes to design. We're committed to enhancing your company's image—disc after disc.

EVEREST™ II

The Color of Success — Rimage gives you spectacular color and crystal clear text and graphics whether you're printing one-of-a-kind or thousands of the same.

Everest II printing is permanent, colorful, and high resolution.

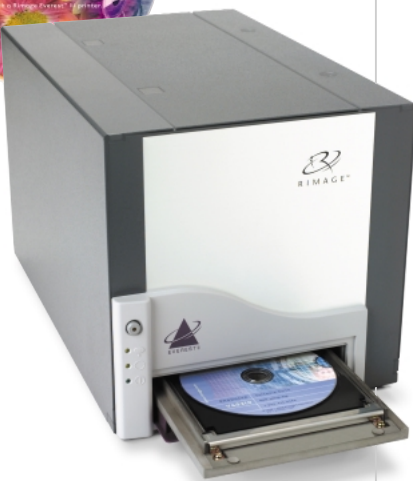
Everest II systems are most useful for:

- Photo environments where thumbnail images are desired
- Retail transactions where water resistance and durability are important
- Marketing communications where high quality is a must
- Archival applications where long life and durability are important
- Software, presentations, and corporate reports where maximum impact and quality are required

Everest II's innovative thermal retransfer technology reproduces colors, text and graphic images at an amazing 173 lines per inch, surpassing magazine standards (133 – 150 lpi) to create a unique photo-realistic result. Everest II is the only printer on the market that prints edge-to-edge, on the hub, and allows you to customize print and saturation settings to create the look you want.

Thermal retransfer is the newest method of direct-to-disc printing available.

First, the Everest II prints the color image to a proprietary multi-layer clear film. Then using heat and pressure, the image is permanently bonded to the surface of the disc. As the film lifts away, it leaves a donor layer behind that covers and protects the printed image. The resulting print is impervious to water, scratches, dirt, and just about anything an optical disc will conceivably encounter.



| | |
|---|------------------------------------------------------------|
| ● | Virtually indestructible printing ideal for commercial use |
| ● | Less than one minute per disc for great throughput |
| ● | Photo-realistic color, plus monochrome and grayscale |
| ● | Maximum flexibility for mainstream applications |

PRINTER SOFTWARE

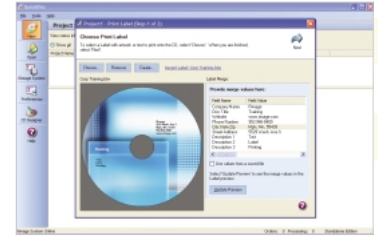
Print directly from most graphic applications or use the Rimage CD Designer software that comes with all Rimage printers. CD Designer is an easy-to-use application that gives you the ability to create, import and customize the graphics you want to print on a CD or DVD surface. With CD Designer you can add background colors, custom text, photos, mail-merge data and even bar codes by clicking and dragging within the simple CD Designer user interface.

CD Designer allows you to:

- Add graphics, text, objects, and photos from almost any source
- Create your own templates for changeable discs with a consistent look
- Import from BMP, DCX, DIB, DXF, EPS, IMG, JPG, PCX, PNG, TGA, TIF, WMF, WPG
- Merge up to 99 variable fields per label

CD Designer supports:

- Incremental serialization of discs
- 22 main types of bar codes including two UPC variants and the four regional codes of the Australian mail system



Choose and customize your label. Easy-to-follow prompts ensure a trouble free process.

PRISMPLUS!™

Perfectly Efficient — PrismPlus! thermal printer, with its exclusive Perfect Print™ feature, offers stellar monochrome and color printing with impeccably clear text and full custom capabilities. The Perfect Print feature on our automated solutions also allows you to print text on pre-silkscreened CDs or DVDs. PrismPlus! systems are most useful for:

- Digital video and music applications where cost control is important
- High volume disc printing applications
- Corporate reports, statements, and records archiving
- Monthly financial and payroll statements

Direct thermal printing with PrismPlus! is the most affordable method of direct-to-disc printing. This single stage process utilizes a thermal ink ribbon. The high-resolution print head heats the ribbon at the desired points causing the ink to bond to the surface of the disc. Using precise electronic control over both print elements and the motion of the disc under the head, the PrismPlus! printer is able to print at either 300 x 300 dpi or 300 x 600 dpi. This level of resolution renders the smallest text, the most detailed logo, or the most precise graphics with ease and provides great readability. The resulting print is waterproof, resists most scratching, and will last the life of the disc under normal use.

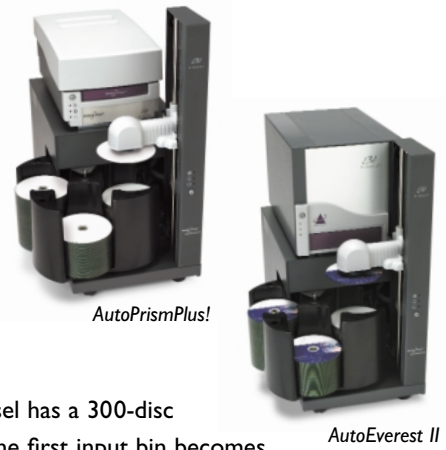
The PrismPlus! printer excels at applications where good quality direct-to-disc printing is desired, a high level of durability is needed, and cost per disc must remain low. With per-disc costs of less than five cents the PrismPlus! is the world leader in print economy. And, with a mono print ribbon capable of printing 2,100 discs, this is one printer that won't require a lot of attention while doing its job.



- | | |
|---|-----------------------------------------------------------|
| • | Less than 5 cents and 5 seconds per disc |
| • | 300 x 600 dpi monochrome and color printing |
| • | Direct thermal printing process requires no drying time |
| • | Perfect Print™ allows text printing to pre-screened discs |

AUTOPRINTERS: AUTOMATED SOLUTIONS WHEN HIGH VOLUME LABEL PRINTING IS A MUST

Both the AutoEverest and the AutoPrismPlus! come equipped with the fastest and most robust disc robotics made today. Rimage's state-of-the-art Producer series robotics are driven by a closed-loop-servo motor system and a reinforced toothed belt. The steel picker rides on roller bearings and slide rails and takes only two seconds per movement, picking from a plane of 85°– 95°.



AutoPrinters also come equipped with a 400-bin carousel. The carousel has a 300-disc input capacity with the remaining bin used for output. When empty, the first input bin becomes the second output bin and so forth. A Rimage AutoPrinter can print up to 300 discs without a single operator intervention—ideal for pairing with large duplication towers in digital video applications. Rimage AutoPrinters are the workhorses of the duplication industry.

THE RIMAGE 480i

Vivid Color, Fast Throughput and Astonishing Resolution — right from your desktop. Rimage 480i printers are most useful for:

- Digital video and photographic studios where top photo quality is desired
- Smaller volume applications where cost of acquisition is important
- Organizations and departments where high quality printing must co-exist with cost control

Powered with HP-enabled technology, the Rimage 480i desktop thermal inkjet printer prints an astonishing 4800 dpi with a full spectrum of 16.7 million colors. And with the smallest ink droplet on the market (3 pl), the Rimage 480i offers unrivaled ink control, giving you superior ink economy. The Rimage 480i print engine offers the lowest lifetime cost of any inkjet printer on the market and the longest print runs. Longer print runs mean fewer cartridge changes, less operator attention and better overall economy for the life of the printer.

The Rimage 480i is the most affordable entry point in the Rimage printer group. The low cost of acquisition is matched with high quality results. Rimage 480i will print extraordinary detail with its 4800 dpi HP print engine. And with the full color range at your disposal, you'll create true photographic quality prints. The new photo ink cartridge launches the Rimage 480i into previously unreachable areas of direct-to-disc printing. The Rimage RPI cartridge features light cyan, light magenta and black—giving the printer six color options when rendering photographic images.



- | | |
|---|-----------------------------------------------------|
| ● | World-class printing for small to medium businesses |
| ● | Smallest droplet for unsurpassed ink control |
| ● | 4800 dpi resolution for superb color management |
| ● | Initial and per print costs fit desktop needs |

NEW! RIMAGE MEDIA KITS™

Rimage Media Kits are designed to maximize quality and convenience when using Rimage printing systems with Rimage Everest II, Rimage 2000i/480i, Rimage PrismPlus!, and the Rimage 360i. Rimage Media Kits come pre-assembled with the right amount of printing supplies for the discs included in the kit. No more worrying about whether your media really is compatible. No more expensive discs that end up as printing rejects. Rimage has partnered with high-quality media manufacturers to bring you the best combination of media and printing supplies at a competitive price. CD-R and DVD-R media made to Rimage specifications cannot be purchased through traditional media channels. Add all that to Rimage guarantees that cover recording, printing and data longevity, and you have an unbeatable combination.

SPECIFICATIONS



EVEREST™ II

Print Technology
Thermal Retransfer
MicroDry™ Variable Dot

Print Resolution
173 lpi (lines per inch)
300 x 300 dpi or
300 x 600 dpi

Color Management
Photo optimized or process optimized

Print Speeds—CMY
59 Seconds Normal mode
78 Seconds Best mode

Ribbons
3-Color (CMY) ribbon
Part # 202944-001
4-Color (CMY+White) ribbon
Part # 202945-001
Monochrome (black) ribbon
Part # 202946-001
Retransfer (transparent) ribbon
Part # 203384-001

Prints per ribbon
3-color (CMY) 500
4-color (CMY+W) 375
Monochrome (black) 1000
Retransfer (transparent) 1000

Media Types
120mm CD and DVD media

Label Editor Software
CD Designer for Windows included

Print Drivers
Windows 2000, XP

System Requirements
Pentium or Greater with min. 64MB RAM
Windows XP requires 128 MB

Interface
USB 1.1 for printing
Serial for robotics

Power
100-120V/220-240V
3.9-2.9A
50/60 Hz
500W maximum

Operating Temperature
60° F to 86° F (15.5° C to 30° C)

Relative Humidity
30% to 80% non-condensing

Certifications
Emissions: FCC Class B, EN 55022 Class B
Susceptibility: EN55024
Safety: EN 60950, UL1950, c-UL1950
Conformance Marks: UL, cUL, CE

Physical
Height 9.7" Width 9.4" Depth 14.8"
(24.6 cm x 24 cm x 37.5 cm)
Weight 40.8 lbs (18.5 kg)



PRISMPUS!™

Print Technology
Direct thermal transfer printing

Print Resolution
300 x 300 dpi or
300 x 600 dpi

Print Speeds—single color
300 x 300 — 7 seconds
300 x 600 — 30 seconds

Ribbons
3-color CMY Part # 202506-001
Monochrome red Part # 202082-002
Monochrome blue Part # 203217-001
Monochrome black Part # 201737-006

Prints per ribbon
3-color CMY 500
Monochrome red 2100
Monochrome blue 2100
Monochrome black 2100

Media Types
120mm CD and DVD media

Effective Print Area
115 mm (4.5 inches)
when printing to 120mm media

Label Editor Software
CD Designer for Windows included

Print Drivers
Windows XP, 2000, NT 4.0

System Requirements
Pentium or Greater with min. 64MB RAM
Windows XP requires 128 MB

Interface
USB 1.0, Centronics Parallel, Serial
(USB supported with Windows 2000 & XP)

Power
100-240 VAC 50/60 Hz
1.10-0.55 Amps auto ranging

Operating Temperature
60° F to 90° F (15.5° C to 32° C)

Relative Humidity
30% to 80% non-condensing

Certifications
Emissions: FCC Class B, EN 55022 Class B
Susceptibility: EN55024
Safety: EN 60950, UL1950, c-UL1950
Conformance Marks: UL, cUL, CE

Physical
Height 6.0" x Width 8.5" x Depth 14.0"
(15.24 cm x 21.59 cm x 35.56 cm)
Weight: 18 lbs. (8.2 kg)



THE RIMAGE 480i™

Print Technology
Thermal Inkjet printing

Printing Resolution
Up to 4800 dpi (driver selectable)

Color Management
HP PhotoREt IV and ColorSmart III

Droplet Size
3 pl (pico-liter)

Pixel Density
5.76 million pixels per square inch

Print Speeds
26 to 132 seconds per disc,
depending on coverage

Print Modes
Plain (normal, best, max dpi)
Premium (normal, best, max dpi)
Photo (normal, best, max dpi)

Ink Cartridges
Black Rimage # RB1
CMY Rimage # RCI
Photo Rimage # RPI

Prints per cartridge
Varies, dependent on content,
coverage, and color

Media Types
120mm CD and DVD media

Label Editor Software
CD Designer for Windows included

Print Drivers
Windows 2000, XP

System Requirements
Pentium or Greater with min. 64MB RAM
Windows XP requires 128 MB

Interface
USB 1.1

Power
100-240V, 1.0 A
50/60 Hz Auto-ranging

Operating Temperature
60° F to 95° F (15.5° C to 35° C)

Relative Humidity
20% to 80% non-condensing

Certifications
Emissions: FCC Class B, EN 55022 Class B
Susceptibility: EN55024
Safety: EN 60950, UL1950, c-UL1950
Conformance Marks: UL, cUL, CE

Physical
Height 6.0" x Width 15.75" x Depth 15.0"
(15.2 cm x 40 cm x 38.1 cm)
Weight 14 lbs. (6.35 kg)



Rimage Corporation
7725 Washington Avenue South
Minneapolis, MN 55439
USA

phone: 952.944.8144

fax: 952.944.7808

web: www.rimage.com

Rimage Europe GmbH
Hans-Böckler-Str. 7
63128 Dietzenbach
Germany

phone: 49.0.6074.8521.0

fax: 49.0.6074.8521.100

web: www.rimage.de

Warranty and Service Options

Consult the Rimage website at www.rimage.com for complete warranty information, service options, and the most up-to-date product information and specifications.